

# Dog Bite Prevention

Lake County Health Department  
Animal Care and Control Program



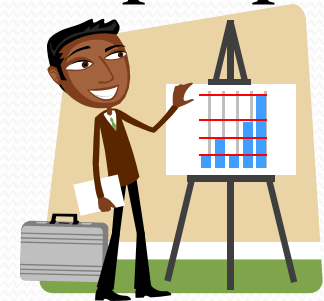
LakeCounty

Health Department and  
Community Health Center

# Statistics

Did you know that **in 2010 over 4.5 million people were bitten by dogs** in the U.S.?

- Over 1 million of those bites went unreported
- 1 in 5 bites required medical attention
- Over 31,000 victims required reconstructive surgery
- The most common victims were children and home service providers
- A total of 1,027 dog bites were reported here in Lake County



# “My dog doesn’t bite”

We have all heard this before. However, fact is any dog can bite regardless of the breed. Most dogs are friendly, but like humans, dogs have bad days too. Any dog can bite especially if he or she:

- feels threatened
- is injured
- is annoyed
- is protecting his or her food, toys and/or puppies

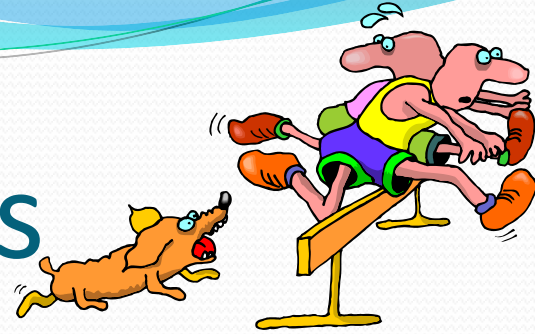


# Safety around owned dogs

- Always seek permission before petting someone else's dog
  - Approach the dog slowly and quietly
  - Pet the dog's back gently
- Do not tease dogs
- Do not bother dogs when they are eating or sleeping
- Do not bother any dog caring for puppies
- Do not stick your fingers in cages or through fences
- Do not play rough - dogs may bite by accident



# Safety around stray dogs



If a dog charges at you, the last thing you want to do is run away or scream. It's natural for a dog to give chase, which could result in a bite incident.

- Stand your ground, tell the dog “NO!” and back away slowly
- Never let a dog get behind you; you want to see the dog at all times
- Try to place something between you and the dog
- Get help and contact your local police department

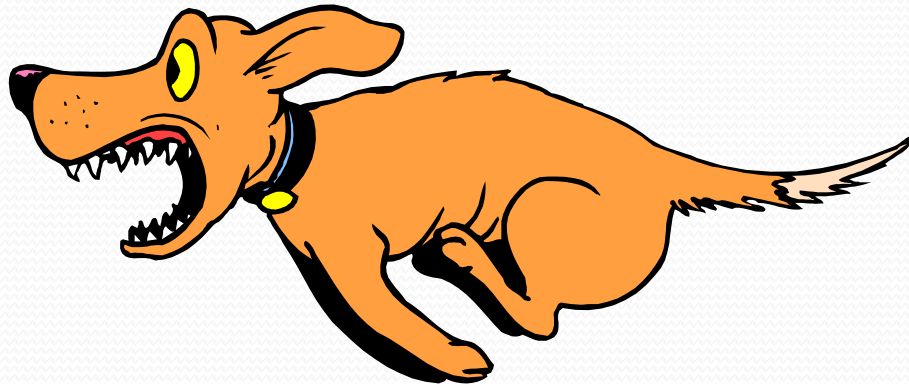
# If your own dog bites you

- Confine the dog immediately and call your local police department for assistance
- Seek immediate medical assistance whether the injury is minor or severe
- Consult with your veterinarian to verify that your dog is up to date on all its vaccinations
- Contact Lake County Animal Care & Control for guidance
- Talk to a professional dog trainer for additional help to prevent future incidents



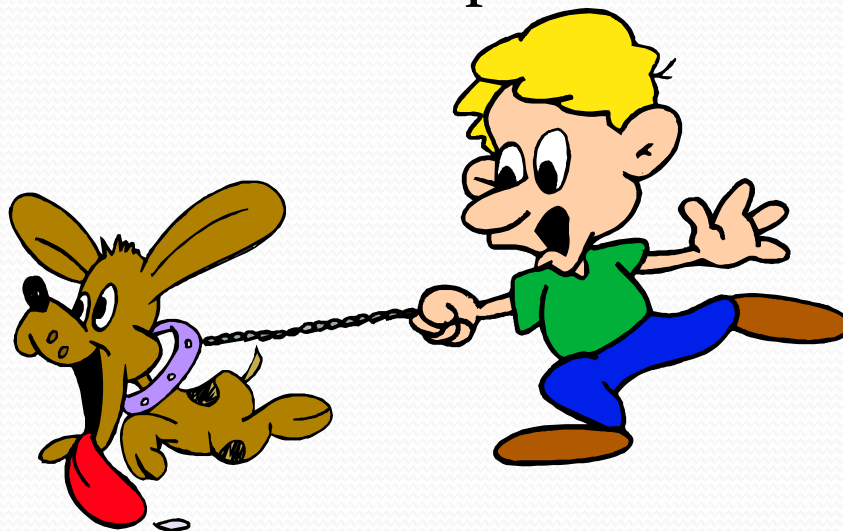
# If a stray dog bites you

- Confine it if possible; if you not able to confine it, try to find out where it lives
- Call your local police department
- Seek immediate medical assistance
- Report the incident to Lake County Animal Care & Control



# Tips on avoiding aggressive behavior

- Spay/Neuter your dog
- Socialize your dog
- Train your dog
- Do not play aggressive games with your dog
- Do not leave children unsupervised with any dog





# Working together for a bite-free Lake County

We all play an important role in dog bite prevention. A responsible dog owner should be proactive by training and socializing his or her dog(s). Non-dog owners should always be aware of their surroundings and practice dog safety when in the presence of any dogs. Together we can work towards a safer community.

